



Certified Coating Specialists Inc.

Professionalism in painting, safety, environmental stewardship – realizable value.

www.ccscoatings.ca

Mission Statement

We will exceed, not just meet customer expectations in the areas of safe work practices, environmental protection, quality control and service. We are committed to providing the resources, education, training and daily reinforcement to empower everyone in CCS's employ to meet this goal of exceeding customer expectations.

CCS Group of Companies

CCS is dedicated to providing our clients with a broad range of coating related solutions primarily targeted towards corrosion and abrasion resistance. From concrete floor coating to tank lining to bridge repainting to general maintenance coating, the CCS Group is effectively structured to meet our clients requirements while delivering safe, timely & cost effective results.

History And Client Base

CCS has been providing industrial painting and coating services since 1994. Head office for the company is located in Castlegar, British Columbia. CCS also has two satellite offices, one in the Lower Mainland and one on Vancouver Island. The company has a 12,000 sq. ft. coating application facility situated on 3 acres of land. Coating related assets exceed \$2,000,000.

Services

- Industrial Painting, Coating and Lining
 - Floor Coating
 - Tank Linings
 - Internal Pipe Coatings
 - Ultra High Pressure Water Jetting
 - High Pressure Grit Blasting
 - Elastomeric Coating
 - Plural Component Urethane Coating
 - Bridge Coatings
 - Lead & Asbestos Abatement
 - High Tower Trestles
 - Foam Insulation
 - Coating System Development
 - Coating Failure Analysis
 - Comprehensive Safe Work Plan
 - Development, Implementation and Monitoring
 - Comprehensive Quality Assurance Programs and Inspection
 - Occupational Health And Safety
- CCS has a comprehensive coatings related O H & S program, which has been developed in strict compliance with the WSBC O H & S regulations.

Ethics Policy

CCS and its employees are committed to fulfilling all commitments in a professional manner. That means making business decisions and acting in a way that is ethical and is in conformance with traditional human values, the policies of our customers and applicable legal requirements.

As we make decisions, CCS values must manifest themselves in everything we do. Our ethics policy is an extension of our values and reflects our continued-commitment to ethical business practices and regulatory compliance. We must all acknowledge our individual and collective responsibilities to manage our business activities with integrity.

O H & S Policy

The Senior Management of CCS Coatings Group is determined to promote safe and healthy working conditions and attitudes within the company; therefore:

It shall be the responsibility of all management to establish and provide adequate maintenance of the plant and equipment to ensure that physical and health hazards are guarded against or eliminated, and to develop work procedures conducive to accident and disease-free production.

It shall be the responsibility of every supervisor to ensure that workers are trained in and follow all safe work procedures and all pertinent regulations.

It shall be the duty of every worker to follow proper safe work procedures, to observe all regulations pertaining to the assigned work, and to cooperate in attaining the objective of an accident and disease-free, work environment.

See the CCS Supervisors Safety Manual for additional information.

General Information

Insurers: Johnston Meier Insurance Agencies Ltd.
Bonding: BFL Canada Insurance Services Ltd.

Environmental Policy

CCS is committed to minimizing the environmental impacts associated with the application of coatings while meeting the needs and objectives of our clients.

This commitment commences with working in conjunction with clients and appropriate regulatory agencies to ensure that safe work strategies and procedures are developed and applied to protect our environment. When deemed necessary it is assured by appropriate testing, documented monitoring and follow-up reporting.

The end goal is to always provide each client with quality workmanship delivered in an environmentally safe and efficient manner.

Quality Assurance Commitment

All work undertaken by CCS is performed in strict accordance with SSPC-QP Standards.

CCS will develop a comprehensive understanding of the objectives of the client.

Coating system specifications will be evaluated to ensure that the requested or recommended system will fulfill all client objectives.

Safe work practices and quality control procedures will be developed and articulated to ensure efficient and monitored delivery of the agreed on coating system.

Quality control reports will be provided to client contacts as and when deemed required.

CCS warrants all workmanship for a minimum period of one year.

Geographic Service Area

Western Canada
The Pacific North-West

Union Affiliation

International Union of Painters and Allied Trades, Local 138, Vancouver BC,
(604) 524-8334



Certified Coating Specialists Inc.

Professionalism in painting, safety, environmental stewardship – realizable value.

www.ccscoatings.ca

Professionalism in Painting

The painting/coatings industry today, especially the application of high performance coatings, demands far more forethought and strategic planning than ever before.

The complexity of the latest generation chemistries; the available options for surface preparation; the mobilization of large equipment; and the demands of an effective safe work plan must be considered for all projects. In addition, environmental impact potentials and risk management, quality control, waste management and schedule development, are all aspects of a properly planned and professionally executed coating project.

The range of chemistry options available today can be overwhelming for those who must rely on the advice of sales people or consultants that do not have specific education or experience in the coatings field. Surface preparation has gone well beyond traditional sanding or abrasive blasting to the use of ultra high pressure water jetting, electrical induction and chemical stripping, to name but a few options.

Safe work, environmental stewardship and quality control, each of which must be managed as an independent discipline, require project specific planning, plan implementation, effective communication, training, testing and subsequent documentation of performance results and on going monitoring. In addition, access, containment, atmospheric controls and waste management, often critical components of the process, all of which demand sound planning.

To represent oneself as a professional, high performance coating contractor today, CCS believes a company must invest extensively in staff education and training. This ensures that when called upon to advise, create or execute a project, CCS can respond rapidly, correctly, and effectively.

The application of the paint is the easy part of this business. Doing it safely, to specification, over a properly prepared substrate and in accordance with all associated regulations, while providing the best aesthetic results, takes a dedicated team of professionals of diverse disciplines.

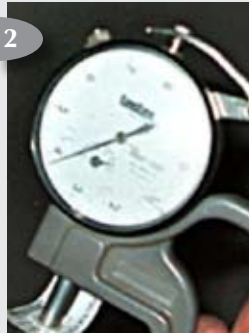
CCS professionals include:

- NACE certified inspectors,
- SSPC trained and certified Specifying and Project Management specialists,
- SSPC trained and certified Lead Abatement specialists,
- Construction Safety Officers
- Certified, Red Seal, Industrial Painters.

At CCS, we work frequently with asset owners and general contractors that require assistance well beyond the application of a coating system.

CCS has the team, has the track record, has the bonding and insurance ability to act as a general contractor of a coating project or to make a substantial contribution to a team as a sub contractor on multi discipline projects.

1. Surface Preparation Standards are assured through QC procedures.
2. QC equipment is calibrated and certified.
3. Attention to detailing results in quality work.
4. Stripe coating is integral to coating system longevity.
5. The finished product reflects our commitment to quality.



Health and Safety for Coating Personnel

Our Corporate philosophy is: "There has never been a dollar bill created or offered that justifies anyone not going home safe at the end of a shift".

The commitment and effort of CCS and our leadership personnel has led to over **200,000 man hours worked, without a lost time incident.** This achievement provides CCS with the lowest WSBC man hr cost in the industry today.

At CCS, we invest extensively in safety related equipment, training and education. Management is constantly teaching and re-enforcing the concept that it is up to the people on the job to look out for their fellow worker. By taking care of each other we are all able to ensure that everyone heads home at the end of each shift healthy.

The CCS Occupational Health and Safety Policy addresses management, supervisor and worker responsibilities. The CCS Health and Safety Policy is posted at every work site with components reviewed frequently through Tool Box Talks.

We are proud that CCS has developed a comprehensive safe work manual that is recognized as an industry leading document within our trade today. It is designed to cover every aspect, of every task, that any person in the employ of CCS could be asked to execute. The safety manual is a living document and is reviewed and updated as needed and in detail annually.

Under the guidance and instruction of a Certified Construction Safety Officer, all company Supervisors and Foremen must review the manual at the commencement of their employment and twice annually thereafter. All CCS personnel that are deemed to hold Supervisory responsibilities under WorkSafeBC/OSHA regulations are made fully aware of their moral and legal obligations to those whom they lead.

The CCS manual is broken down as per:

- RIGHTS & RESPONSIBILITIES/GENERAL CONDITIONS
- HAZARDOUS SUBSTANCES
- ASBESTOS, LEAD & ROCK DUST
- EXPOSURE CONTROL
- PERSONAL PROTECTIVE CLOTHING AND EQUIPMENT
- CONFINED SPACES
- DE – ENERGIZATION & LOCK OUT
- FALL PROTECTION
- TOOLS, MACHINERY & EQUIPMENT
- LADDERS, SCAFFOLDS & TEMPORARY WORK PLATFORMS
- HOISTING & RIGGING
- MOBILE EQUIPMENT
- TRAFFIC CONTROL
- ELECTRICAL SAFETY
- CONSTRUCTION, EXCAVATION & DEMOLITION
- EVACUATION & RESCUE
- OCCUPATIONAL FIRST AID

The communication of safe work requirements is delivered first through the CCS TOOL BOX TALK program. Prior to shift commencement, the shift leader will discuss with all workers what the goals of the shift are, what safe work practices are to be employed and what equipment is to be utilized, for the safe execution of the work. The talk is documented and signed by the work force as indicating it is understood and to be complied with.

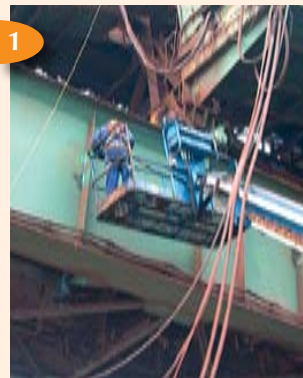
Safe work memos are posted in lunch and office trailers.

Crew leaders execute regular, documented, safety audits to ensure that all safety concerns are being addressed at all times.

Bi-weekly crew safety meetings are held to ensure everyone receives the opportunity to dis-

cuss any concerns or improvements they feel would enhance the job site safety conditions. This helps every employee to feel they are truly part of the overall process and solidifies their commitment to it.

Safe execution of all tasks is the established reality at Certified Coatings Specialists Inc.



1. Safe access and Fall Protection Plans are paramount.

2. Correct use of PPE eliminates the hazards inherent in trade.

3. Daily safety meetings ensure OHS program compliance.

4. Safe work procedures are reviewed on the site.

4



Environmental Stewardship

Certified Coatings Specialists, Inc. recognizes that processes and materials used in paint and coating application, surface preparation and waste management, all have the potential to negatively impact the environment if improperly handled or managed.

As a matter of fact, it is often the coating portion of a project that poses the greatest environmental risk to people & site. **CCS accepts this challenge** and rigorously works to minimize the risks associated with it.

This is achieved by development of a generalized risk assessment and creation of a project specific **ENVIRONMENTAL MANAGEMENT PLAN (EMP)**, which addresses:

Project Information

- Work Activities
- Equipment
- Proposed Work Schedule

Responsibilities

- Description of team member responsibilities as associated with the EMP.

Environmental Features

- Briefly describes the existing physical and biological features and values in the area that could be potentially affected by the project or work.

Potential Environmental Impacts

- Describe and assess the significance of the potential environmental impacts arising from both the planned activities and malfunctions or accidents that may occur in connection with the project, as applicable.

Planning and Regulatory Requirements

- Describe legislation and regulatory requirements, information on consultations and key commitments made to communities and stakeholders, as applicable.

At Certified Coating Specialists Inc., we recognize and accept our responsibilities to our customers, our workers, everyone's children and the environment we all must live within.

Environmental Protection, Mitigation and Compensation Measures

- The over-riding considerations with respect to minimizing environmental impacts are described and addressed and may include.
- Fisheries
- Waste Management
- Oil and Fuel
- Site Security
- Emergency Spill Response

Environmental Monitoring and Incident Reporting

Reference Materials

On review and acceptance of the Environmental Management Plan by all stakeholders, CCS promotes the importance of adhering to the EMP and provides quantitative and qualitative reinforcement with effective testing, documentation and monitoring.

We strive to fulfill our responsibilities by setting our standard of compliance at exceeding expectations.

1. Containment around equipment eliminates fuels and oils from entering the environment.
2. Waterways are protected from releases of toxic and hazardous materials.
3. Dust, lead and other nuisance and hazardous materials are prevented from entering the atmosphere.
4. No structure is too large or complicated to preclude proper environmental protection.





Certified Coating Specialists Inc.

Professionalism in painting, safety, environmental stewardship – realizable value.

www.ccscoatings.ca

Vancouver Island

Phone Toll Free: 866-822-5900

Phone: 250-716-2010 Fax: 250-716-2026

1457 Extension Road

Nanaimo, BC V9R 6R7

Head Office

Phone (toll free): 866-822-5900

Phone: 250-365-5900

Fax: 250-365-3390

1840 Co-op Lane Castlegar, BC V1N 4K2

Lower Mainland

Phone (toll free): 866-822-5900

Phone: 604-320-7891

200-4170 Still Creek Drive

Burnaby BC V5C 6C6



SSPC Certified Contractor